

**The Community Foundation of Washington County, MD, Inc.**, is a tax exempt public charity created by and for the people of Washington County, MD. The Foundation exists to promote local philanthropy and since 1997, over \$7 million has been distributed to the community.

**The Waltersdorf-Henson Endowment Challenge Campaign** raised over \$10 million in endowment dollars for the 16 participating nonprofit organizations. When each of the endowment funds reach maturity, over \$500,000 will be available each year in the form of grants which can be used for operations, programs or scholarships.

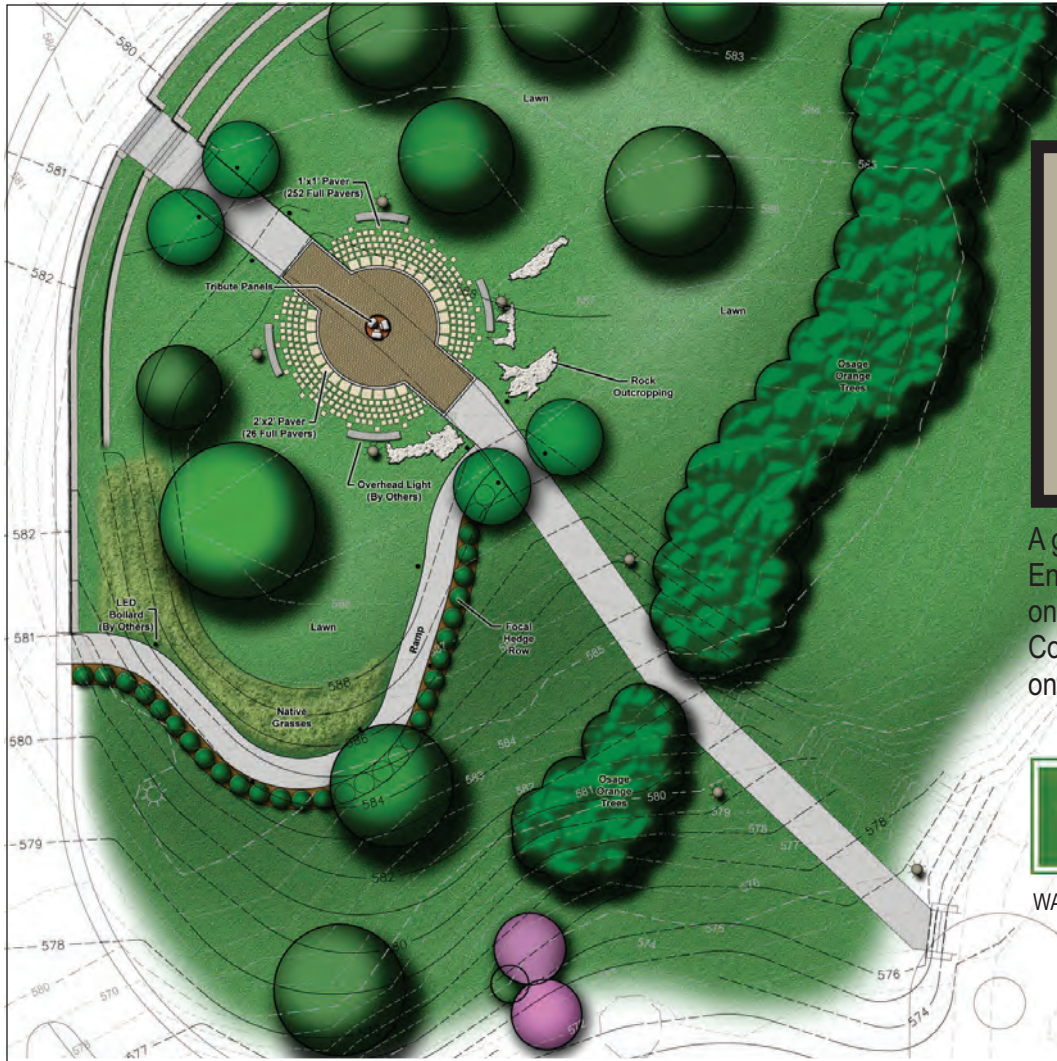


Community Foundation  
of Washington County MD, Inc.  
*Looking forward...giving back*

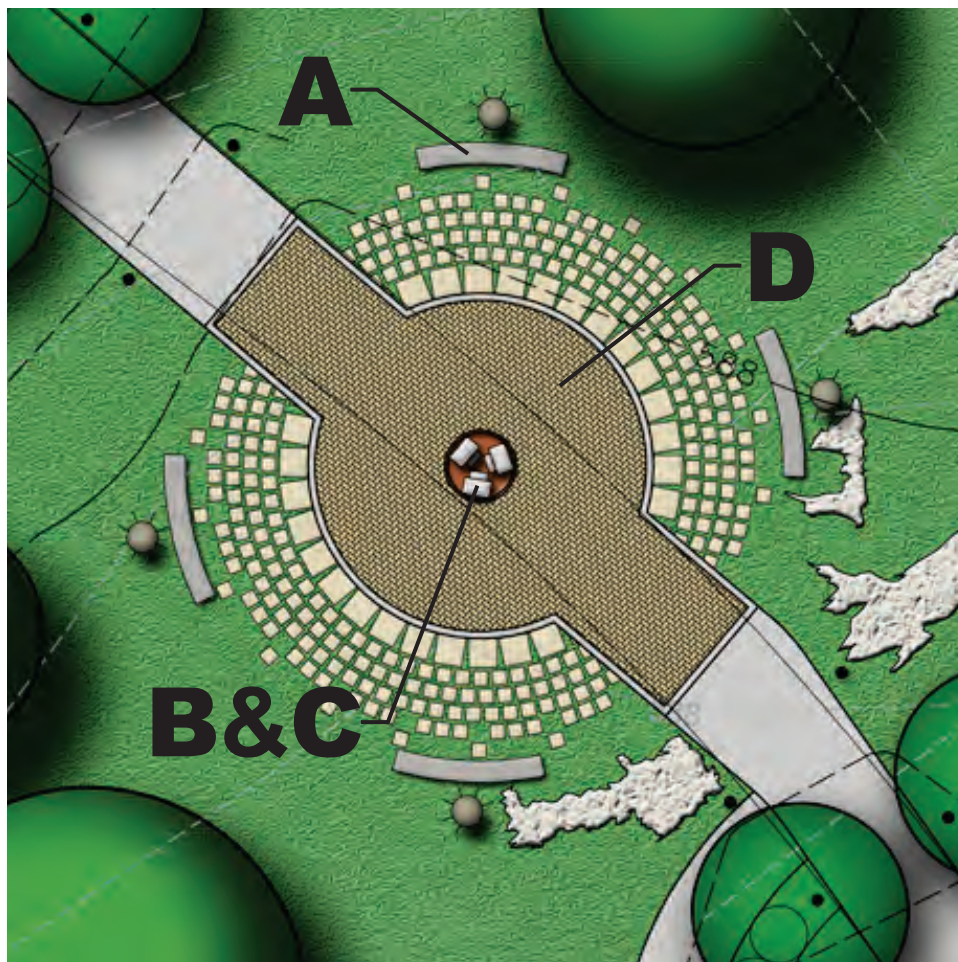
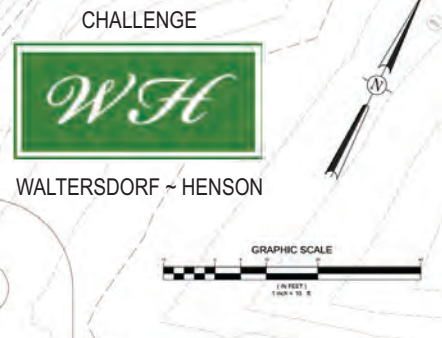
301.745.5210  
[www.cfwcmd.org](http://www.cfwcmd.org)

Please join us in celebrating  
the Waltersdorf-Henson Endowment  
Challenge Campaign





A garden tribute to the Waltersdorf- Henson Endowment Challenge Campaign is being built on the campus of Hagerstown Community College. The garden will be dedicated on September 17, 2011 at 4:30 PM.



Please help us to honor John and Peg Waltersdorf and the Richard A. Henson Foundation for their philanthropic leadership and legacy in Washington County. Sponsorships are limited.

### SPONSORSHIP LEVELS

- A.** \$5,000  
Stone Bench
- B.** \$1,500  
Recognition on Tier #1 of the Tribute Panel
- C.** \$1,000  
Recognition on Tier #2 of the Tribute Panel
- D.** \$100  
Text Engraved Into 4"X8" Brick Paver